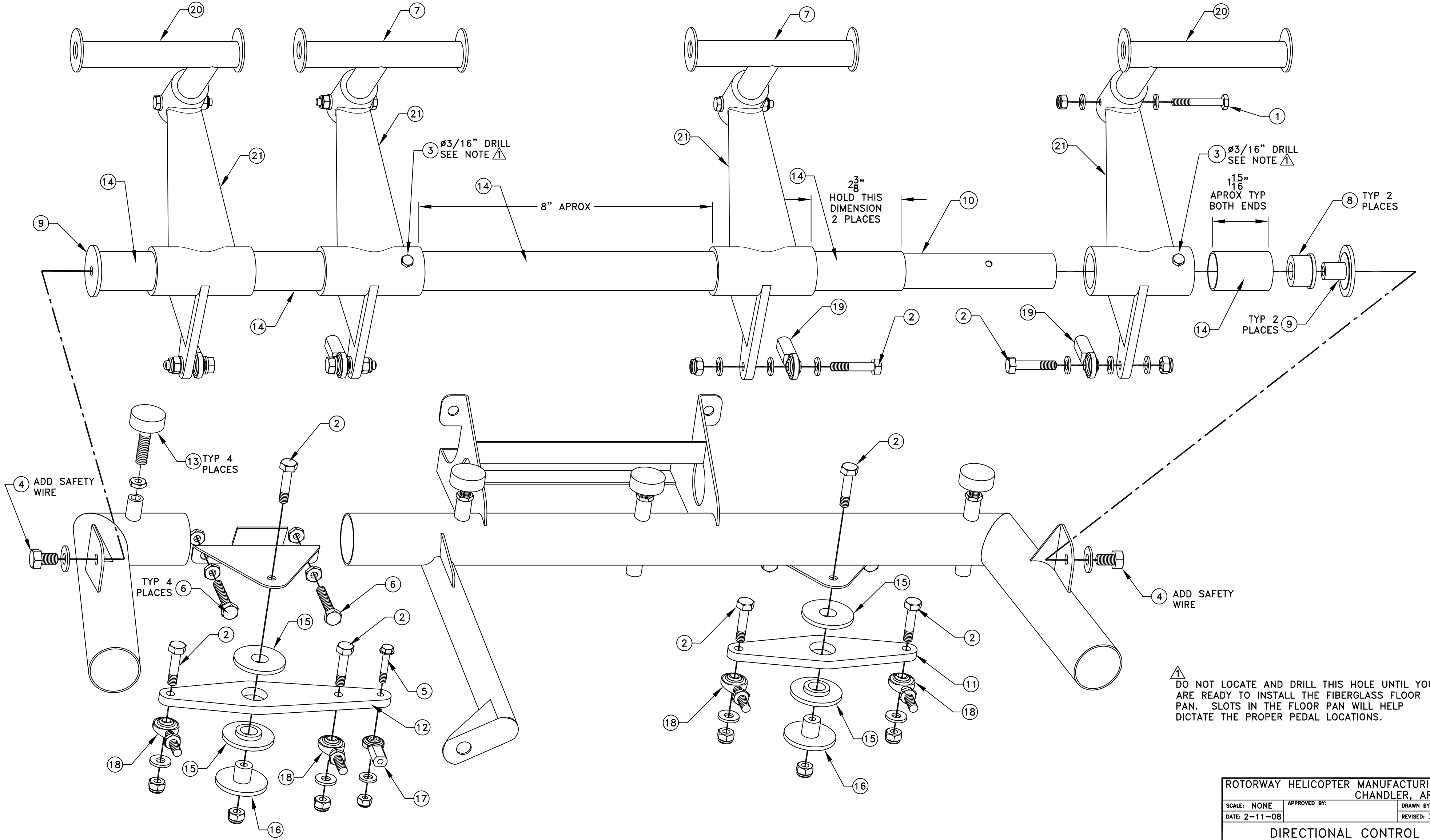


REF. NO.	PART NO.	PART NAME	QTY.	REF. NO.	PART NO.	PART NAME	QTY.
1.	E00-2320	BOLT AN3-14A 3/16 X 1-1/2.....	4	7.	E16-9010	PEDAL WELDMENT.....	2
	E00-4301	WASHER AN960-10 3/16 REGULAR.....	8	8.	E16-1190	NYLON PIVOT BUSHING.....	2
	E00-3301	NUT AN365-1032A 3/16 FIBERLOCK.....	4	9.	E16-6131	CROSS SHAFT MOUNT BUSHING ALUMINUM.....	2
2.	E00-2406	BOLT AN4-11A 1/4 X 1-1/8.....	10	10.	E16-3101	PEDAL CROSS SHAFT.....	1
	E00-4401	WASHER AN960-416 1/4 REGULAR.....	20	11.	E16-3150	SCISSOR BEAM (PASSENGER).....	1
	E00-3402	NUT AN365-428A 1/4-28 FIBERLOCK.....	10	12.	E16-3120	SCISSOR BEAM (PILOT).....	1
3.	E00-2308	BOLT AN3-15A 3/16 X 1-5/8.....	2	13.	E32-3150	BODY SUPPORT ADJUSTMENT PAD.....	4
	E00-4301	WASHER AN960-10 3/16 REGULAR.....	4		E00-3401	NUT AN316-4R 1/4 JAM.....	4
	E00-3301	NUT AN365-1032A 3/16 FIBERLOCK.....	2	14.	E16-3110	PEDAL SPACER TUBE (CUT TO LENGTH).....	4
4.	E00-2501	BOLT AN5H-4A 5/16 X 1/2 DRILLED HEAD.....	2	15.	E16-6120	NYLON SCOSSOR MOUNT BUSHING.....	4
	E00-4501	WASHER AN960-516 5/16 REGULAR.....	2	16.	E16-6130	ALUMINUM SCISSOR MOUNT BUSHING.....	2
		SAFETY WIRE		17.	E16-1200	3/16 FEMALE ROD END.....	1
5.	E00-2305	BOLT AN3-11A 3/16 X 1-1/8.....	1	18.	E16-1130	1/4 MALE ROD END.....	4
	E00-4301	WASHER AN960-10 3/16 REGULAR.....	2	19.	E16-1140	1/4 FEMALE ROD END.....	4
	E00-3301	NUT AN365-1032A 3/16 FIBERLOCK.....	1	20.	E16-9020	PEDAL WELDMENT (OFFSET).....	2
6.	E00-2408	BOLT NAS428-4-14 1/4 X 1-1/2 FULL THD.....	4	21.	E16-5101	PEDAL CASTING.....	4
	E00-3401	NUT AN316-4R 1/4 JAM.....	8				



ROTORWAY HELICOPTER MANUFACTURING CO CHANDLER, ARIZONA			
SCALE: NONE	APPROVED BY:	DRAWN BY: RMR	REVISED: 3-17-17
DATE: 2-11-08			
DIRECTIONAL CONTROL			
MODEL: A600	DRAWING NUMBER: E16-2000	REV: A	