

DIRECTION OF ROTATION

180° OPPOSITE PERPENDICULAR TO ROTATION

RADIUSED SIDE

SHARP SIDE

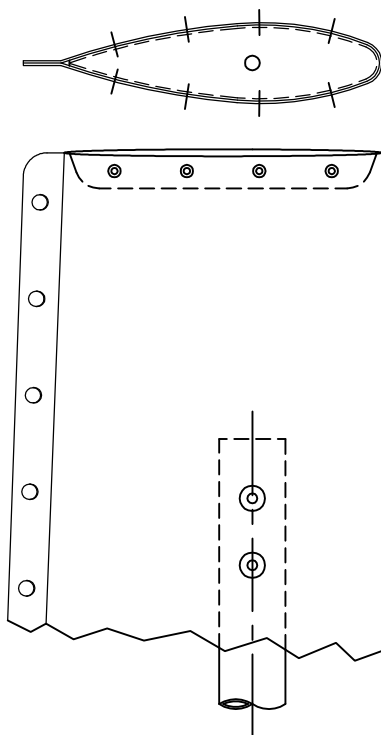
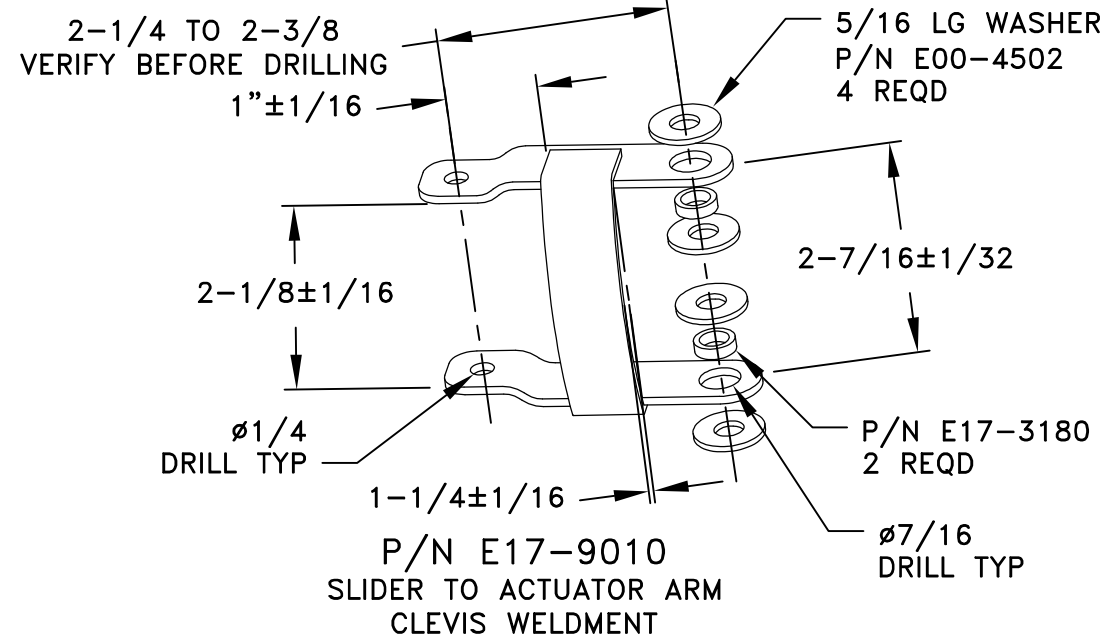
RETAINER (ALIGNMENT BEARING ASSY)

SHARP SIDE

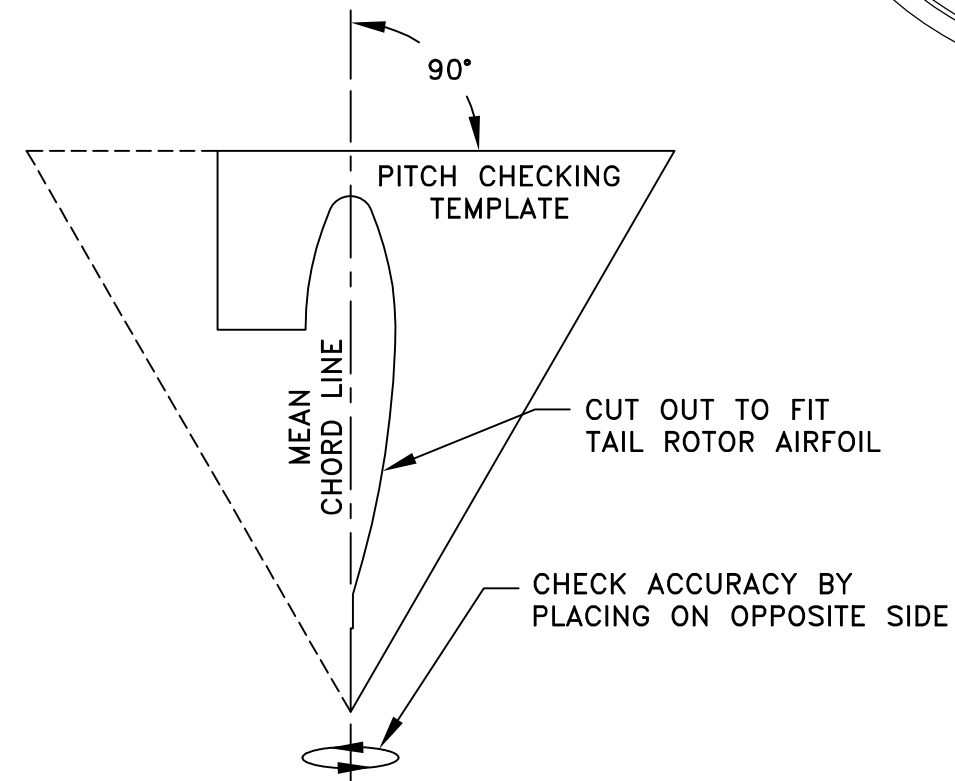
SNAP RING INSTALLATION

INSTALL SNAP RINGS (ONE INNER AND TWO OUTER) WITH RADIUSED EDGES FACING TOWARDS THE RETAINER AND SHARP EDGES FACING OUTWARD. ORIENT SNAP RING ENDS 90 DEGREES FROM DIRECTION OF ROTATION AND 180 DEGREES FROM EACH OTHER. INSTALLATION AND REMOVAL OF SNAP RINGS MUST BE PERFORMED USING SUITABLE PLIERS. USE OF AN IMPROPER TOOL MAY CAUSE DAMAGE TO THE SNAP RINGS OR GROOVE, RESULTING IN LOSS OF ONE OR BOTH TAIL ROTOR BLADES. SUGGESTED PLIERS: MILBAR 4450, NEW BRITAIN P67, OR K-D 445.

NOTE: INSTALL TAIL ROTOR BARREL ONTO SHAFT BEFORE INSTALLING PITCH PINS.



TIP CAP INSTALLATION
COMPLETE BALANCING OPERATION BEFORE FINAL TIP CAP INSTALLATION. USE (8) ALUMINUM COUNTERSUNK RIVETS (P/N E00-6200) PER TIP. SPACE AS SHOWN (EXACT LOCATION NOT CRITICAL).



PITCH CHECKING TEMPLATE
MAKE FROM 1/2 TO 3/4 INCH THICK WOOD

NEGATIVE

STEP 1.

POSITIVE

TOP VIEW

USE BOLT P/N E00-2401
CASTLE NUT P/N E00-3400
COTTER PIN P/N E00-5000

P/N E17-8250 2 REQD
SEE TEMPLATE E17-3
TAIL ROTOR PITCH
ACTUATOR ARM

P/N E17-6126
CARRIAGE SLIDER
ASSY

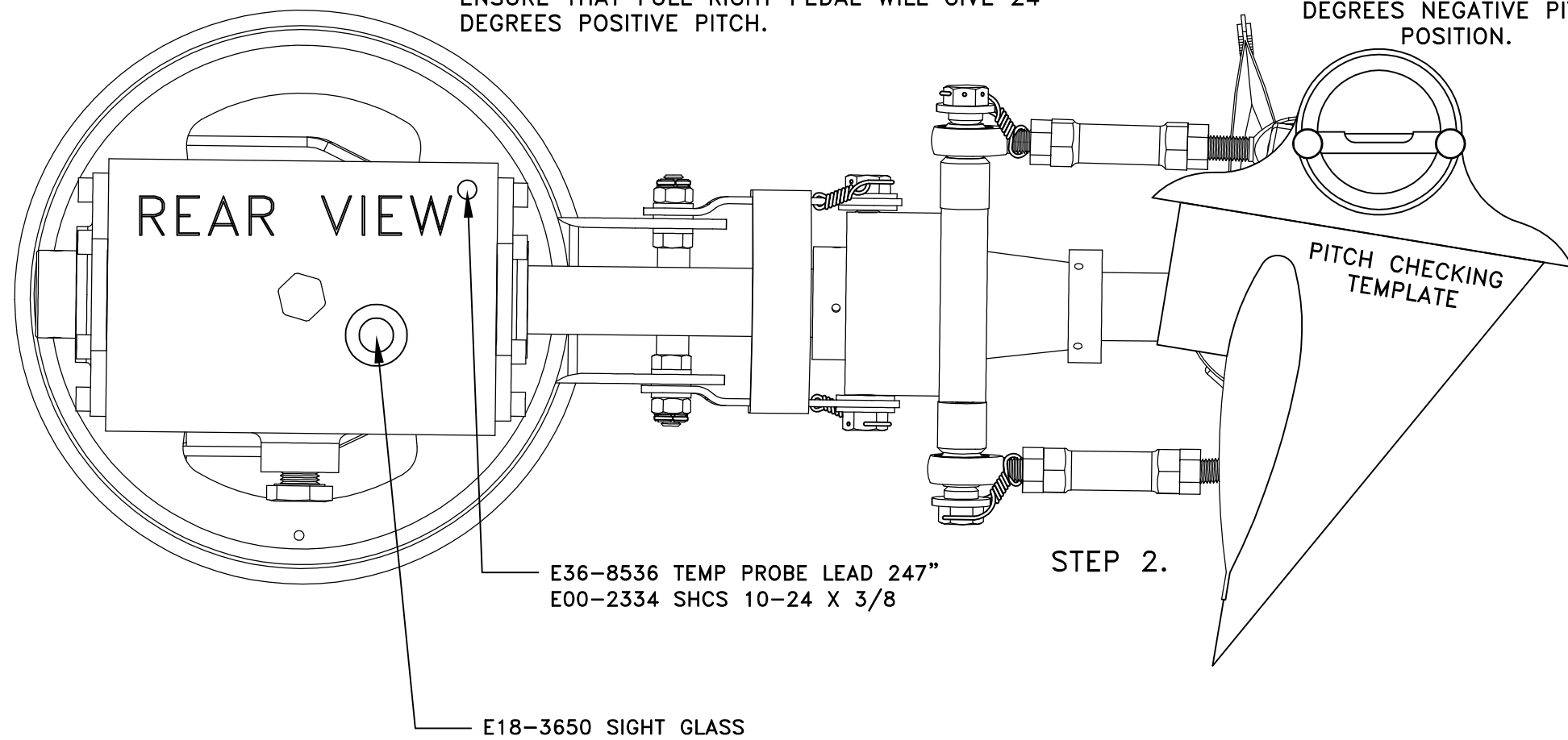
SAFETY WIRE

SAFETY WIRE
P/N E17-9010
(SEE DETAIL)

PITCH SETTING

1. PLACE ARM IN FULL NEGATIVE POSITION.
2. ADJUST EACH PITCH LINK TO 8 DEGREES READING (ROTATE 180 DEGREES TO CHECK SECOND BLADE).
3. ADJUST BOTH BLADES AS CLOSE AS POSSIBLE TO 8 DEGREES NEGATIVE PITCH (WITHIN 1/2 TURN OF PITCH LINK).
4. AFTER ADJUSTMENTS ARE MADE. CHECK TO ENSURE THAT FULL RIGHT PEDAL WILL GIVE 24 DEGREES POSITIVE PITCH.

PROTRATOR SET AT 8 DEGREES NEGATIVE PITCH POSITION.



STEP 2.

| | | | |
|---|--------------------------|---------------|------------------|
| ROTORWAY HELICOPTER MANUFACTURING CO CHANDLER, ARIZONA | | | |
| SCALE: NONE | APPROVED BY: | DRAWN BY: RMR | REVISED: 3-21-17 |
| DATE: 2-19-08 | | | |
| TAIL ROTOR DETAILS | | | |
| MODEL: A600 | DRAWING NUMBER: E17-2001 | REV: B | |