

9

8

7

6

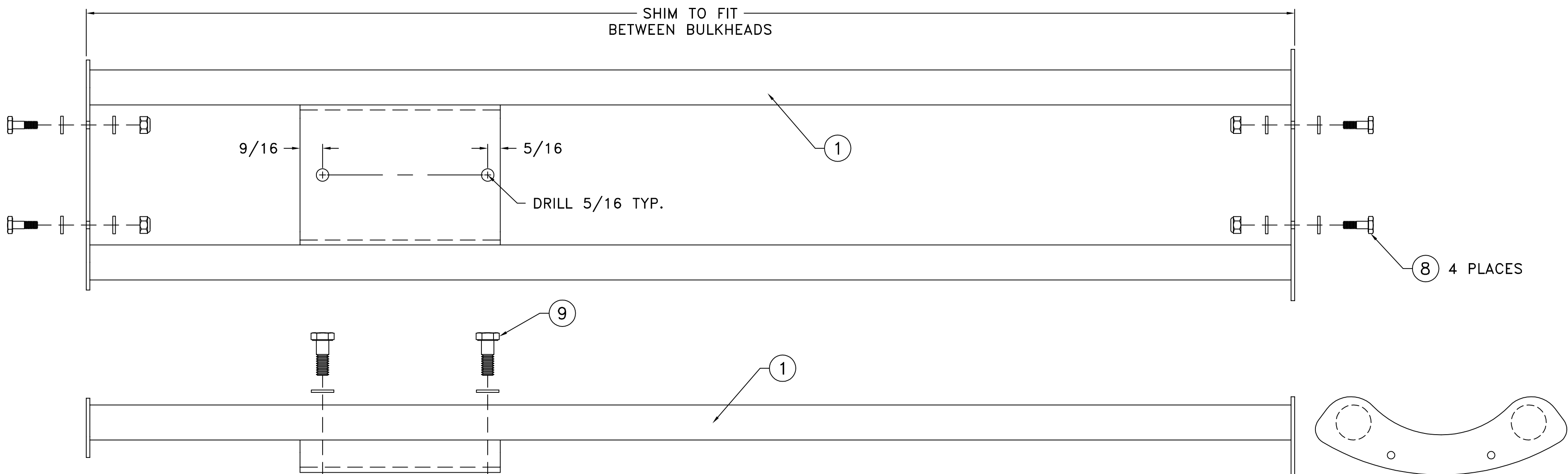
5

4

3

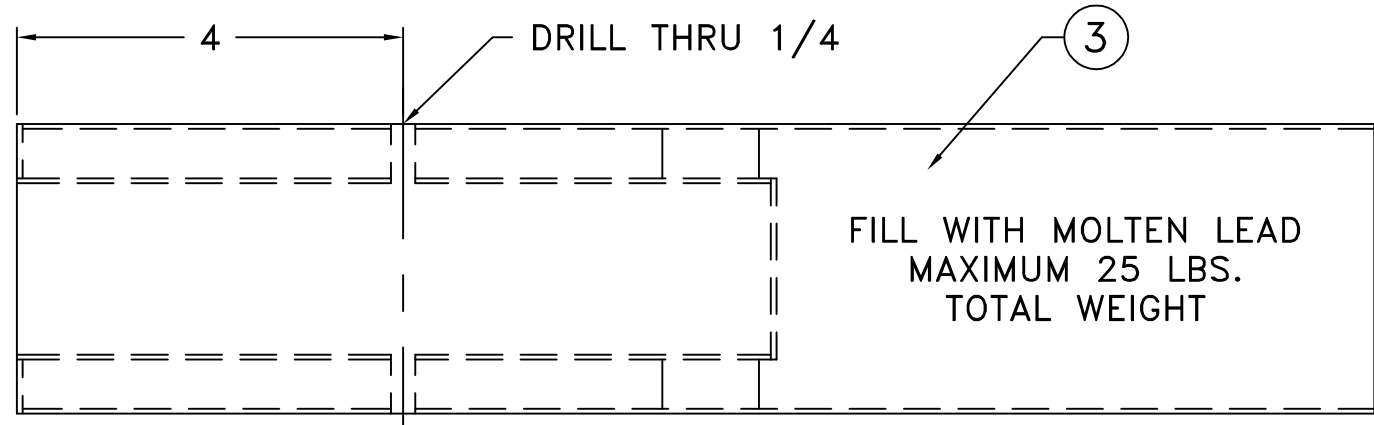
2

1

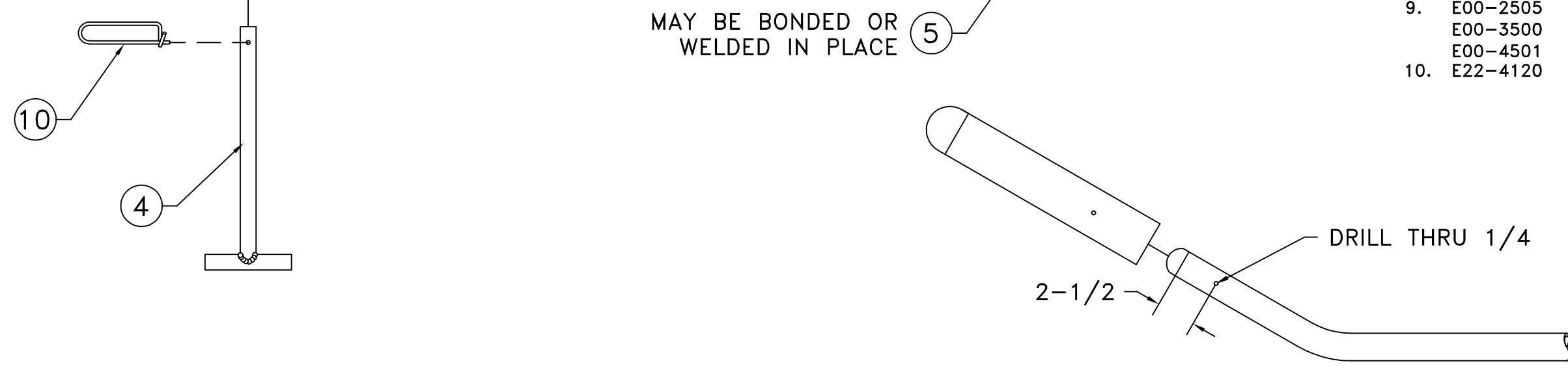


A SPACER SHOULD BE MADE IF A GAP EXISTS BETWEEN WELDMENT AND INSIDE OF TAIL BOOM SKIN

NOTE: MOUNT BALLAST WEIGHT HERE FOR DUAL FLIGHT



REF. NO.	PART NO.	PART NAME	QTY.
1.	E22-9000	SUPPORT TUBE WELDMENT.....	1
2.	E22-9011	MOUNT TUBE WELDMENT.....	1
3.	E22-9021	BALLAST WEIGHT TUBE WELDMENT.....	1
4.	E22-9030	BALLAST WEIGHT PIN WELDMENT.....	1
5.	E22-1092	BALLAST WEIGHT END CAP.....	1
6.	E22-6205	RIVET 1/8 X 1/4 ALUM CSK POP.....	2
7.	E22-8100	END PLUG.....	1
8.	E00-2301	BOLT AN3-5A 3/16 X 5/8.....	4
	E00-3301	NUT AN365-1032A 3/16 FIBERLOCK.....	4
	E00-4301	WASHER AN960-10 3/16 REGULAR.....	8
9.	E00-2505	BOLT 5/16 X 7/8.....	2
	E00-3500	NUT AN365-524A 5/16-24 FIBERLOCK...	2
	E00-4501	WASHER AN960-516 5/16 REGULAR.....	4
10.	E22-4120	SAFETY CLIP.....	1



NOTE: FOR SOLO FLIGHT, MOUNT BALLAST WEIGHT ON FRONT OF PASSENGER SIDE SKID (REINFORCED AREA)

ROTORWAY HELICOPTER MANUFACTURING CO CHANDLER, ARIZONA			
SCALE: NONE	APPROVED BY:	DRAWN BY: WAR	
DATE: 1-18-08		REVISED:	
BALLAST WEIGHT			
MODEL: A600	DRAWING NUMBER: E22-2000	REV: A	