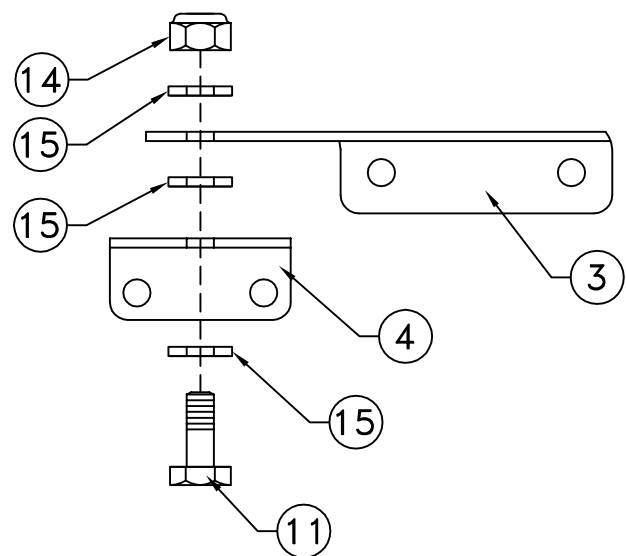
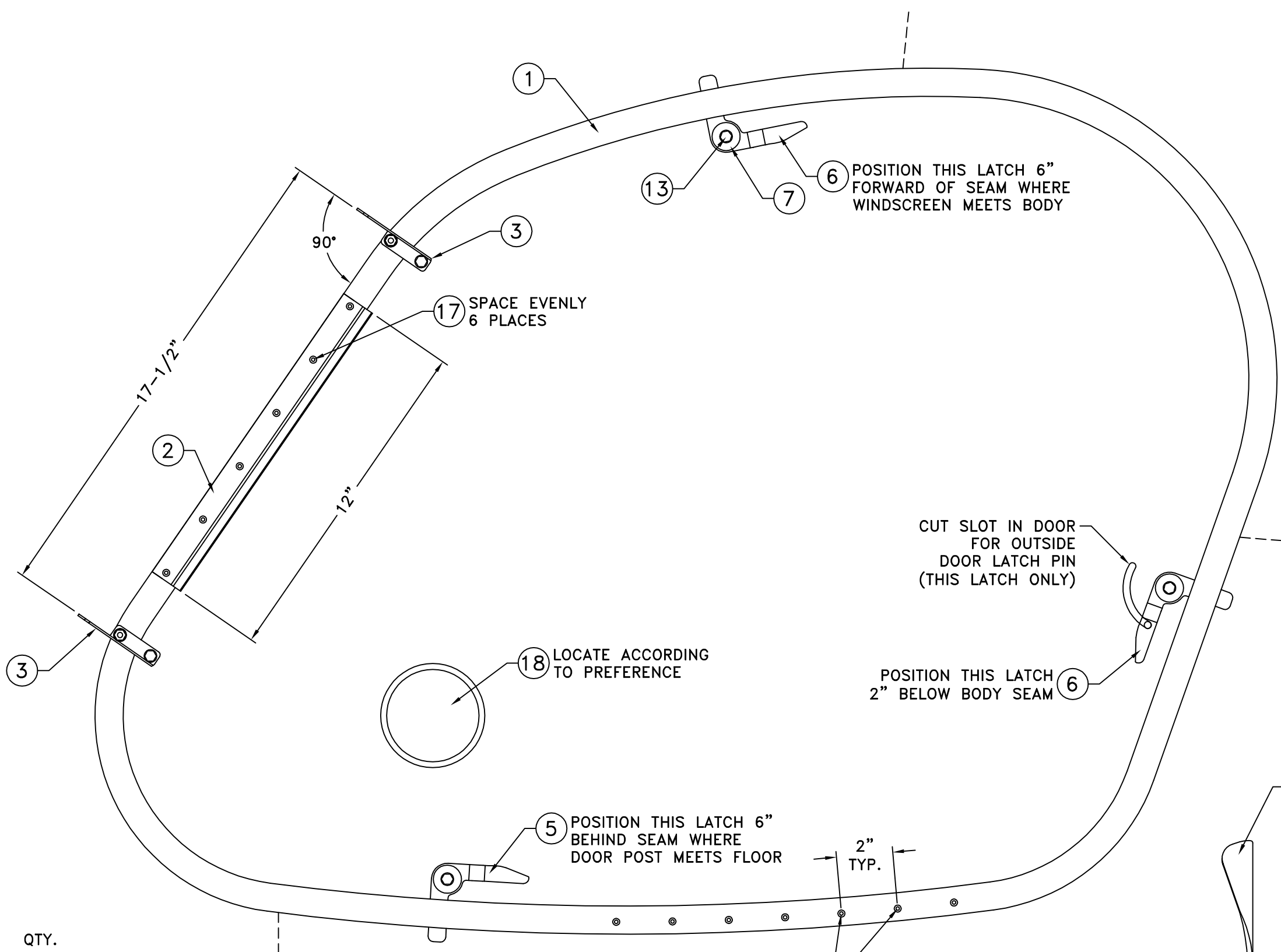
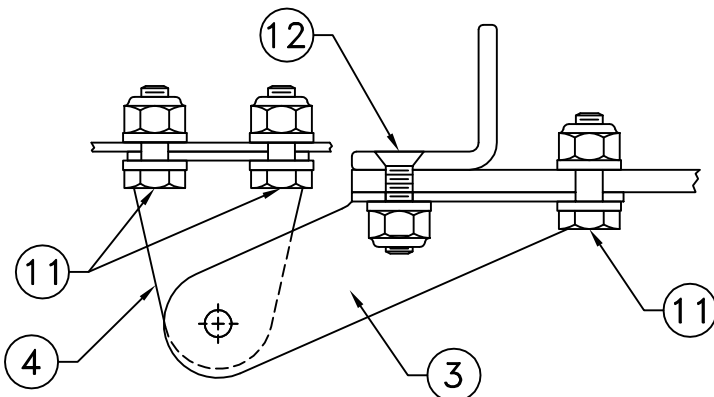


BODY AND DOOR HINGES
SIDE VIEW



BODY AND DOOR HINGES
TOP VIEW



POSITION THIS LATCH 6" FORWARD OF SEAM WHERE WINDSCREEN MEETS BODY

SPACE EVENLY 6 PLACES

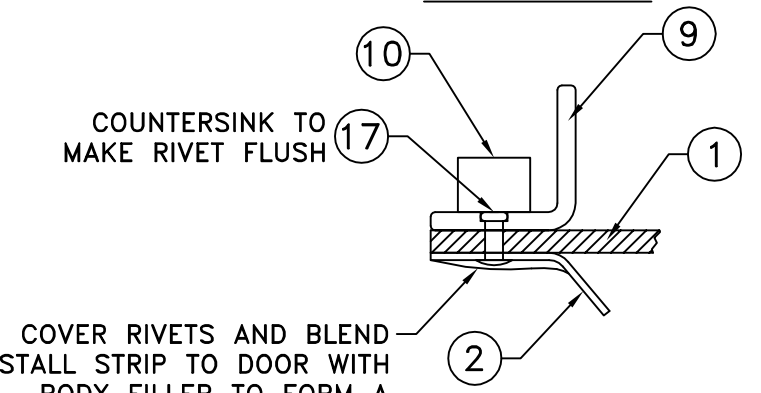
CUT SLOT IN DOOR FOR OUTSIDE DOOR LATCH PIN (THIS LATCH ONLY)

POSITION THIS LATCH 2" BELOW BODY SEAM

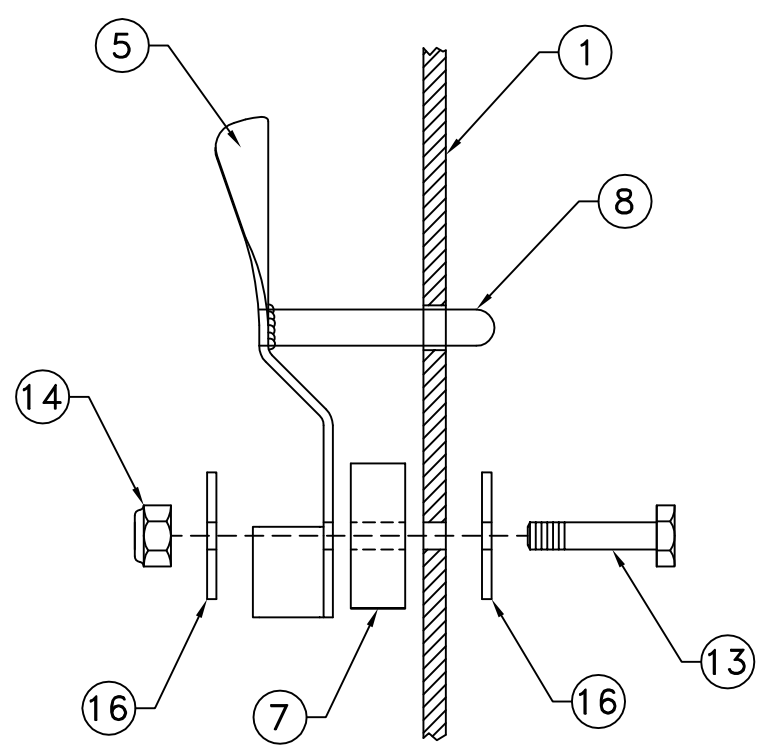
POSITION THIS LATCH 6" BEHIND SEAM WHERE DOOR POST MEETS FLOOR

DOOR/STIFFENER RIVETS 2" SPACING AROUND DOOR

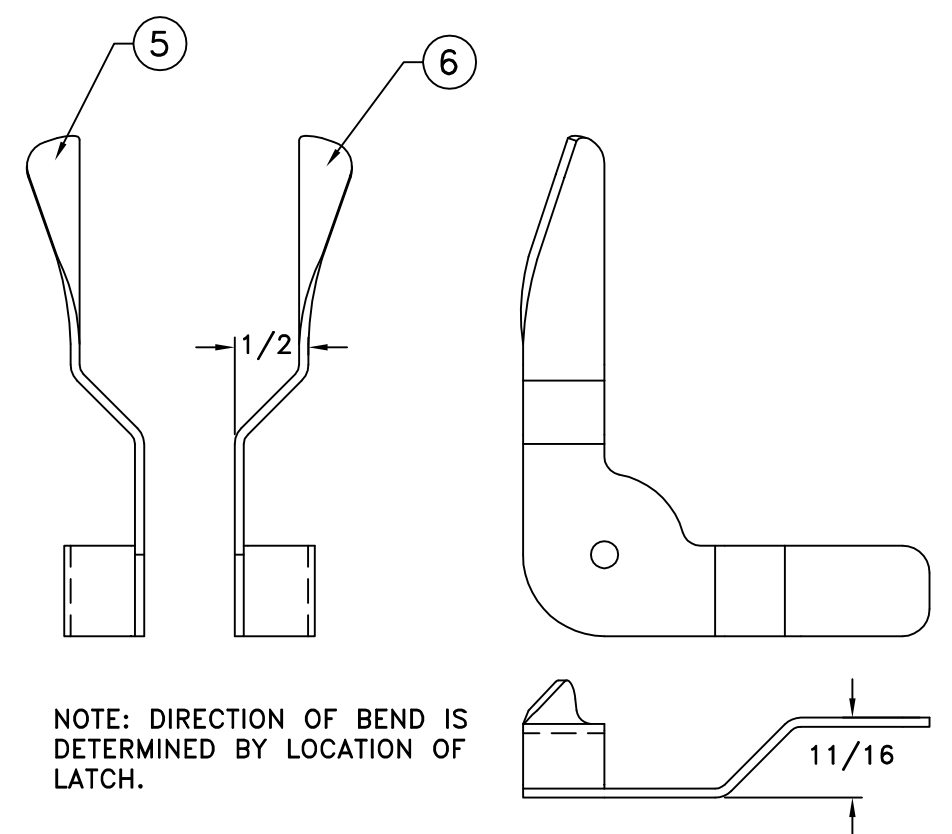
STALL STRIP



LATCH INSTALLATION



DOOR LATCHES



REF. NO.	PART NO.	PART NAME	QTY.
1.	E41-7120	DOOR, LEFT (PILOT).....	1
	E41-7130	DOOR, RIGHT (PASSENGER).....	1
2.	E41-3130	STALL STRIP.....	2
3.	E41-3110	DOOR HINGE.....	2
4.	E41-3120	BODY HINGE.....	2
5.	E41-1170	DOOR LATCH LEFT.....	3
6.	E41-1180	DOOR LATCH RIGHT.....	3
7.	E41-2200	DOOR LATCH SPACER.....	6
8.	E41-3100	OUTSIDE DOOR LATCH PIN.....	2
9.	E41-7140	DOOR STIFFENER, LEFT (PILOT).....	1
	E41-7150	DOOR STIFFENER, RIGHT (PASSENGER).....	1
10.	E41-1120	WEATHER STRIPPING.....	2
11.	E00-2300	BOLT AN3-4A 3/16 X 1/2.....	16
12.	E00-2302	SCREW 3/16 X 5/8 CSK.....	4
13.	E00-2304	BOLT AN3-7A 3/16 X 7/8.....	6
14.	E00-3301	NUT AN365-1032A 3/16 FIBERLOCK.....	26
15.	E00-4301	WASHER AN960-10 3/16 REGULAR.....	24
16.	E00-4302	WASHER AN970-3 3/16 FENDER.....	12
17.	E00-6206	RIVET 1/8X 1/4 ALUM POP AAP-44.....	110
18.	E54-4050	DOOR VENT 3-1/4".....	2

ROTORWAY HELICOPTER MANUFACTURING CO CHANDLER, ARIZONA			
SCALE: NONE	APPROVED BY:	DRAWN BY: WAR	
DATE: 1-23-08		REVISED:	
DOORS			
MODEL: A600	DRAWING NUMBER: E41-2000	REV: A	